



USTM

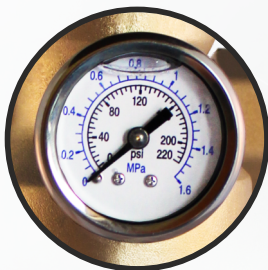
Professional
water treatment

PRESSURE REDUCER FILTER AQWELL



PRESSURE REDUCER

no need to install
a separate reducer



MANOMETER

monitoring of water
pressure in the system



BACKWASH SYSTEM WITH WATER DRAIN

TWIST & CLEAN SYSTEM



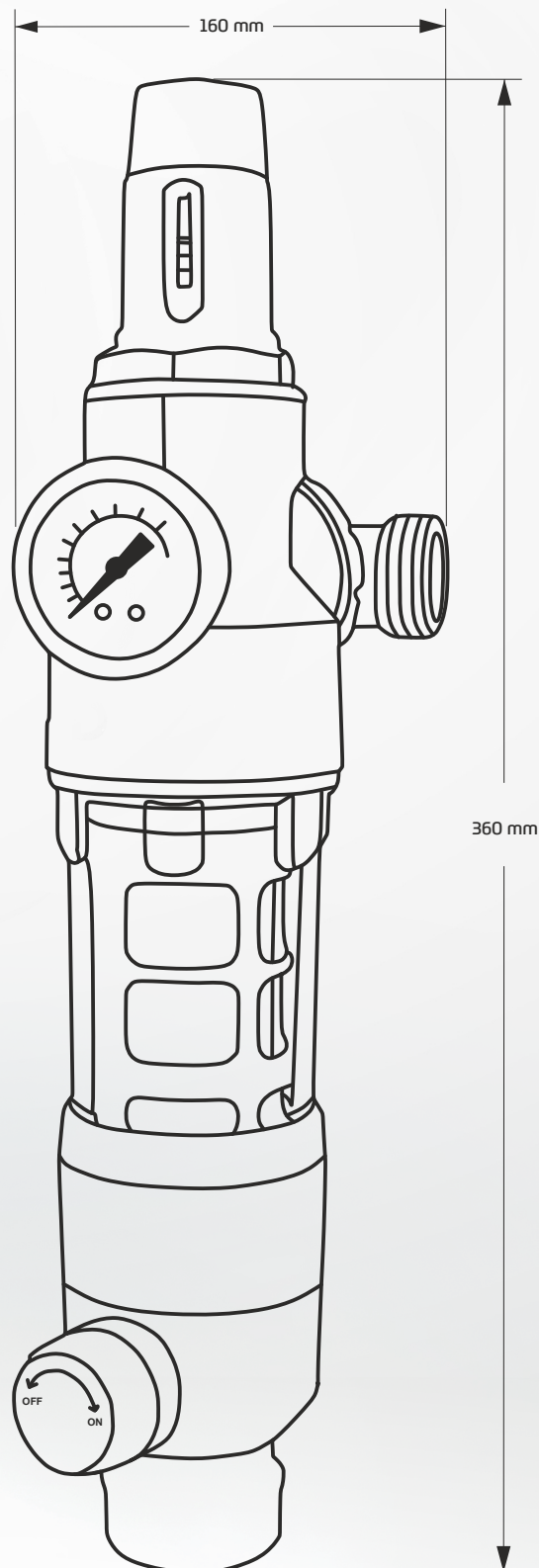
- Filtration of solid impurities: sand, rust, limescale deposits, etc.
- Can be installed on vertical, horizontal, or angled pipes.
- Universal 1" and 3/4" connection (both female and male threads).
- Backwash System – easy backwashing operation. Simply open a single valve.
- Possibility to drain rinse water directly into the sewage system.
- Twist & Clean System – internal filter housing cleaning without shutting off the water supply.

Technical Data

Symbol	Aqwell 34
Inlet Pressure	Max. 8 bar
Outlet Pressure	Adjustment range: 2-6 bar
Operating Pressure	Min. 1,5 bar
Operating Temperature	5 - 30°C
Connection Size	¾" i 1"
Filtration Accuracy	40 µm
Filtered Water Flow Rate	4 m³/h
Weight	2,3 kg
Dimensions	160 x 95 x 360 mm
Connection Spacing	95 mm (without union nuts)

Set Contents:

1/4" hose, quick connectors for the hose, union nuts, bracket, steel wrench.



Additionally Available:



Aqwell Auto Controller

The device opens the drain valve and initiates backwashing.

When the filter rinse drain is connected to the sewage system, the device becomes fully automatic.

The controller can be programmed to perform backwashing at intervals ranging from 1 to 99 days. The rinsing duration can be set between 15 and 90 seconds. The controller is powered by both batteries and an adapter.



Replaceable Filter

Filtration Accuracy: 40 µm